

LINE 11
EXTERIOR/ INTERIOR LINEAR RIGID
- LOW PROFILE



R + R



**Colour-Matched. Precision-Cut. Quality-Assured.
Built to Blend. Install-Ready.**

Trusted by designers for precision, consistency, and total system integration. Our updated and extended Linear range brings that same expertise to flexible and rigid luminaires, giving you the freedom to create clean, continuous lines of light, perfectly matched in colour, quality, and performance across every application.

Line 11 delivers a slim, protective housing solution for LED illumination in the smallest architectural details. Using a custom polycarbonate extrusion with a fine diffused finish, it produces smooth, even light while shielding LEDs from impact, dust, and moisture. Designed as a cost-effective yet durable alternative to bare LED tape, Line 11 combines refined optical performance with installation ease and flexibility.

Each fitting is built to order and tested in-house, ensuring precise lengths, clean visual continuity, and long-term reliability in interior, exterior, or marine environments.



Project: Amara Hotel, Limassol, Cyprus. Lighting Designer: Light860

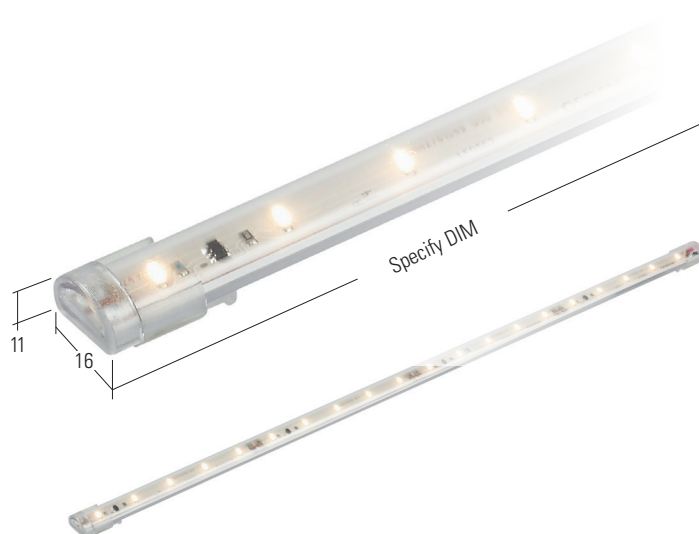
KEY FEATURES

- > Colour-matched to the full LightGraphix range for uniform illumination across all luminaire types
- > Low-profile polycarbonate extrusion with custom frost for uniform diffusion
- > Colour-matched LEDs within 2-step MacAdam ellipse
- > Continuous lengths up to 4.024m; custom-made to 1mm accuracy
- > Various LED outputs, including RGB options
- > Vertical flexibility to a 500mm minimum bend radius
- > Wide ambient temperature range from -20°C to 55°C
- > IP67 protection (IP54 as standard); integral anti-wicking barrier on sealed version
- > Range of mounting profiles
- > Dimming: Switched, 1-10 V, DMX, DALI
- > Designed, manufactured, and tested in the UK





DIMENSIONS

Dimensions in mm

For fixings and dimensions please go to page 3.



WHITE LED ENGINE SPECIFICATION

Engine	 LT500	 LT900	 LT1400
Colour temperature*	2200K, 2400K, 2700K, 3000K, 4000K, 5000K	2200K, 2400K, 2700K, 3000K, 4000K, 5000K	2200K, 2400K, 2700K, 3000K, 4000K, 5000K
Typical LED Circuit Wattage/m	3W	6W	9W
Delivered lumens (L ₁₀₀)*	462	923	1385
Delivered lm/Circuit W**	140	140	139
Source LED lm/m	494	987	1481
Source lm/W	165	165	165
Forward voltage (V ₁₀₀)	24V	24V	24V
CRI	90+	90+	90+
Colour consistency	2 SDCM	2 SDCM	2 SDCM
LOR	0.94		
Colour Consistency	2 SDCM		
LED Lifetime	L80B50 at 50,000hrs		
Applications			

These values are based on LINE 11/3000K/1000mm

*See lumen variance table to the right for lumens apply across all colour temperatures

**LED wattage includes losses associated with using a 90% efficient driver

Lumen variance by CCT	
2200K	-20%
2400K	-11%
2700K	-4%
3000K	0%
4000K	3%
5000K	6%


MECHANICAL

Ambient temperature	-20°C to 45°C*
Materials	Polycarbonate extrusion, end caps, and fixing clips. 0.5mm anodised aluminium heat sink
Weight of product (per m)	100g/m
IP rating	IP54 (IP67 option)
Cable	Pre-Wired 2 core silicon cable 1000mm**
Wiring	Parallel constant voltage wiring 24V
Max. Installed Length	4.024m

*For higher temperatures please contact sales@lightgraphix.co.uk

**Custom length on request

ENVIRONMENTAL

TM65	Available on request
TM66	2.1
Repair + Refurbish	 <p>This product is included in our Repair and Refurbish scheme. This offers customers the ability to send back products to us for repair or refurbishment to extend their life without having to buy new fittings.</p>

THE LINEAR RANGE THAT YOU WOULD EXPECT FROM LIGHTGRAPHIX

Trusted by designers for precision, consistency, and total system integration. Our updated and extended Linear range brings that same expertise to flexible and rigid luminaires, giving you the freedom to create clean, continuous lines of light, perfectly matched in colour, quality, and performance across every application.

Colour-Matched

Developed using LightGraphix-engineered LED tape, tightly binned within a two-step MacAdam ellipse. Every luminaire is visually and chromatically matched across our full range from downlights and uplights to spotlights and linear delivering consistent light quality and tone throughout the project.

Precision-Cut

Every fitting is made to measure in our UK operations - cut, connected, moulded, and IP-tested in-house. With 1mm cutting accuracy and continuous lengths, each product delivers technical precision and a flawless finish, ensuring your specification is realised exactly as intended.

Quality-Assured

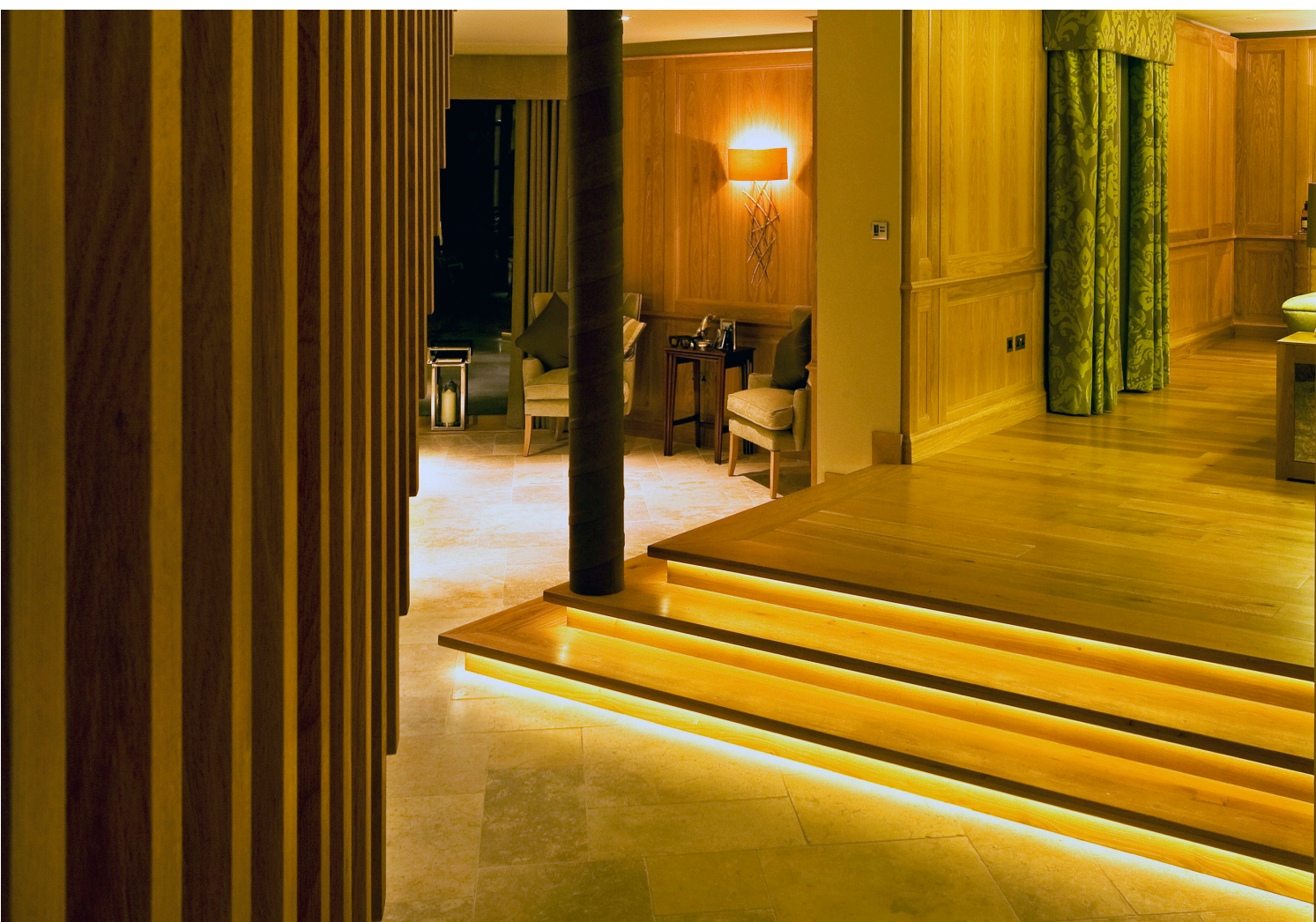
Engineered for durability and optical precision, every LightGraphix Linear Rigid fitting undergoes full in-house quality testing for output consistency, colour uniformity, and thermal performance. Constructed from high-grade aluminium and polycarbonate extrusions with specialist diffusers, the range offers proven resistance to impact, UV, and environmental degradation. Designed for longevity and absolute reliability.

Built to Blend

Designed to give you ultimate flexibility for your lighting design, each Linear product integrates seamlessly with our wider portfolio. Flexible and Rigid options share the same light engines, allowing continuous lines of light that sit discreetly within the architecture and maintain design integrity.

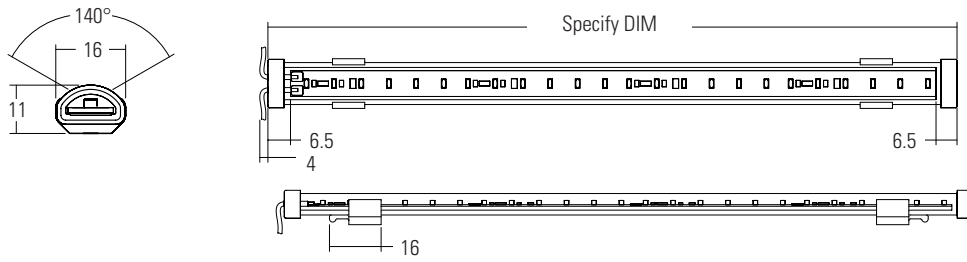
Install-Ready

Manufactured, assembled, and tested through our UK operations for dependable performance and rapid turnaround. Custom lengths, pre-moulded connections, verified IP ratings, and a 5-year warranty reduce on-site work, minimise risk, and ensure every luminaire arrives ready to install. 5-year warranty reduce on-site work, minimise risk, and ensure every luminaire arrives ready to install.



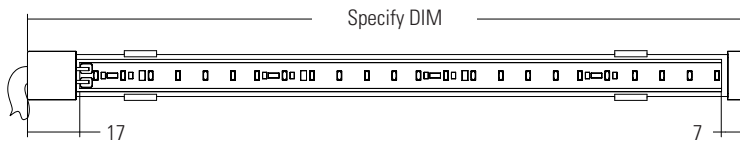
DIMENSIONS AND FIXING ACCESSORIES

Dimensions in mm



IP67 RATED

To achieve an IP67 rating, resin is used to seal each end of the product, and the cable upgraded to an exterior version. This does create a larger gap between the last LED and the end of the extrusion, so particular attention needs to be paid to the mounting detail to avoid a gap in the light between multiple lengths. Please see the suggested mounting details section on page 3 for more information.

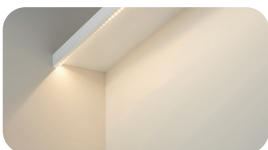
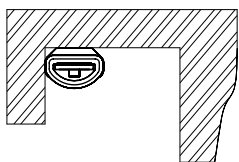
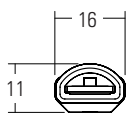


FIXINGS

Dimensions in mm

/SC Flat Fixing Clip

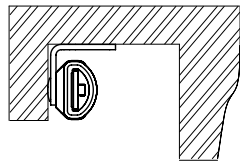
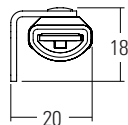
Flat fixing clips provide a simple easily installable option for attaching the product to the mounting surface.



/LBM 'L' Bracket Mounting

L brackets allow for when the mounting surface is at 90° from the orientation needed for the product.

Comes with fixing clips attached



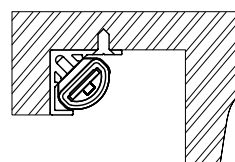
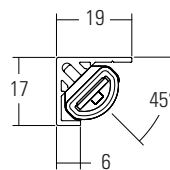
PROFILES

Dimensions in mm

/E1917 Aluminium P Channel.

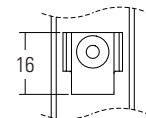
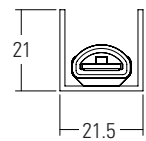
Aluminium P channel angled at 45°. Ideal for shelf details. Silver anodised as standard.

Comes with fixing clips attached.



/E2121 U Channel

The U channel is supplied in white as standard, and with clips attached. It is useful for details where glare is an issue or in details that require the Line11 to be hidden.



SUGGESTED MOUNTING DETAILS

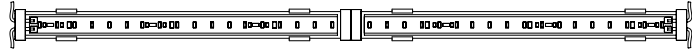
Dimensions in mm

We recommend the distances shown below when mounting multiple lengths end to end to ensure a continuous wash of light on the lit surface.

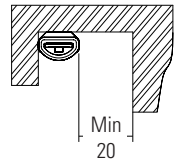
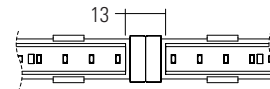
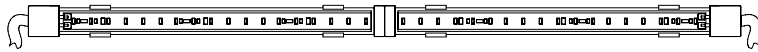
LESS THAN 8M RUNS (IP54 AND IP67 VERSIONS)

By directly placing the two non cable feed ends of 2 x 4m lengths together you can guarantee little or no break in the wash. LD11 should be installed 20mm from the lit surface, and applies for both the IP54 and IP67 versions.

IP54

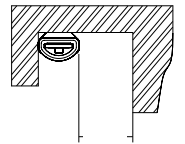
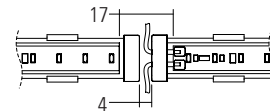
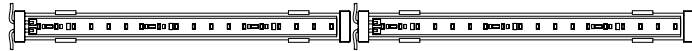


IP67



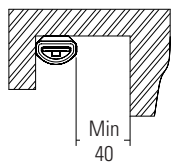
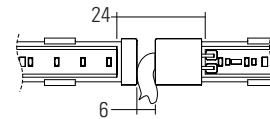
MORE THAN 8M RUNS (IP54 VERSION SINGLE COLOUR)

When more than 2 lengths of the IP54 version are needed then a 20mm gap is needed between the LD11 and the lit surface.



MORE THAN 8M RUNS (IP67 VERSION)

When more than 2 lengths of the IP67 version are needed then a 20mm gap is needed between the LD11 and the lit surface.



LINKED LENGTHS

Only the IP54 version in a single colour is available with multiple linked lengths. The IP67 version can have 1 link only.



FLEXIBLE

LINE 11 is flexible in the vertical plane (around the thinnest side) to a minimum bend radius of 500mm. Cable ties might be needed to fix the profile into the clips.

Further details can be found on the instruction leaflet.



ORDER CODES & OPTIONS

Example: LINE 11-LT500/927/SC/4000mm

Light Engine & Drive Current	LED Colour	IP Rating	Fixing & Profiles	Length (5000mm Max)
<input type="text"/>	<input type="text"/>	<input type="text"/>	<input type="text"/>	<input type="text"/>

LT500

24V 3W/m	LINE 11-LT500
----------	---------------

LT900

24V 6W/m	LINE 11-LT900
----------	---------------

LT1400

24V 9W/m	LINE 11-LT1400
----------	----------------

Super Warm White (2200K)	/922
Very Warm White (2400K)	/924
Extra Warm White (2700K)	/927
Warm White (3000K)	/930
White (4000K)	/940
Cool White (5000K)	/950

IP54 (Standard)	/IP54
IP67 (Rated for wet environments)	/IP67

Fixing	
	/SC
Fixing	
	/LBM
Profile	
	/E1917
Profile	
	/E2121

Drivers

To be used with 24V constant voltage LED Drivers and Controllers, We offer a range of drivers with 1-10V, DMX, and DALI dimming options. Please download the data sheet from the downloads section at www.lightgraphix.co.uk, or contact us for more information.